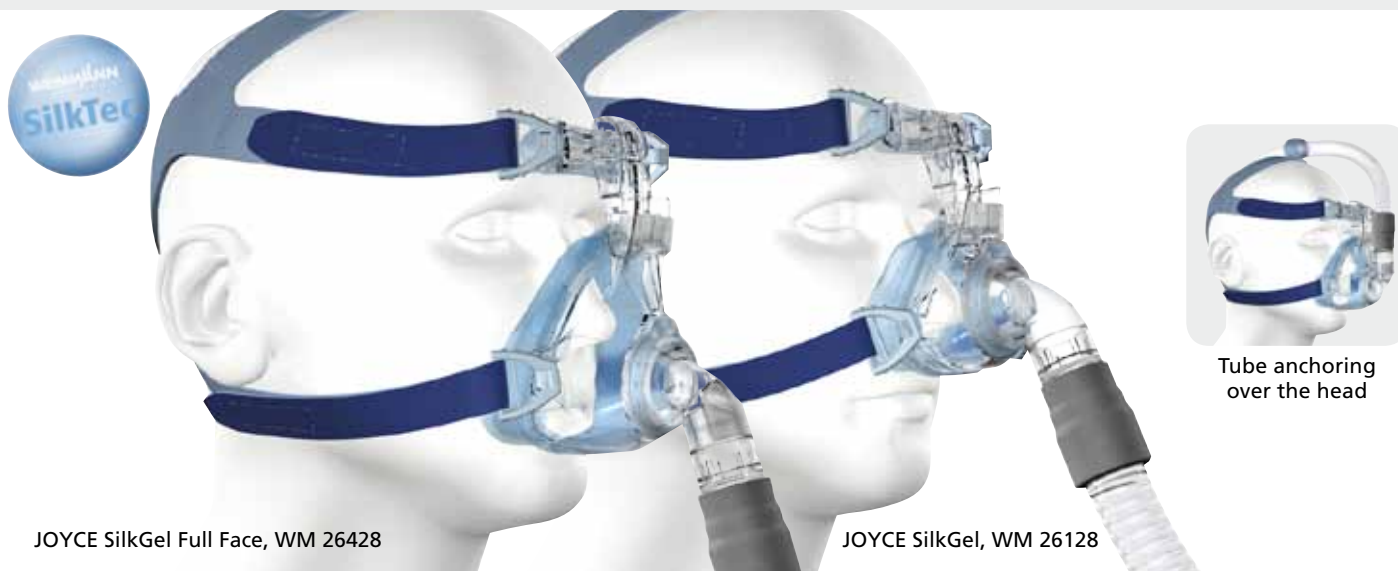


JOYCE SilkGel

Silky soft wearing comfort: the new SilkGel masks in the JOYCE family

JOYCE SilkGel is the new gel variant of the proven masks in the JOYCE family. It is available as a nasal or a full face mask. The newest generation of our customizable masks is distinguished by its high degree of wearing comfort. The mask seal and the forehead cushion have been given a high-quality coating called WEINMANN SilkTec. The smooth surface is soft and silky for guaranteed comfort. The new gel forehead cushion and the headgear with optimized design add the perfect finishing touches to the SilkGel masks.



JOYCE SilkGel Full Face, WM 26428

JOYCE SilkGel, WM 26128

Operating Ease and Wearing Comfort

- Even greater wearing comfort, thanks to the new high-quality coating WEINMANN SilkTec: It ensures a silky soft feeling on the face and reduces shear force.
- Extremely easy to clean because hardly anything (perspiration and the like) adheres to the smooth surface
- For easy assembly the forehead cushion is fitted into pockets that hold it in place.
- Easy to manage headgear: The optimized design and the color-coded Velcro fasteners make the headgear even easier to handle.
- Tube anchoring strap on the headgear as optional fastening option for device tube
- Is delivered in a carton
- Additional storage and transport bag
- Single-layer mask seal makes mask particularly hygienic
- Simple to adjust, perfect fit

- Only gel mask with ball-and-socket joint
- Mask seal and forehead cushion of gel
- Many replacement parts available
- Available in sizes S, M and L

Therapy Convenience

- All-around movable ball-and-socket joint for freedom of movement and a sure and stable mask fit
- The very quiet exhalation system promotes restful sleep for patient and sleeping partner.
- Unique modular design ensures a perfect fit as nearly all silicone and gel components can be combined with each other.
- Pressure range of 4 to 40 mbar
- The quick-release cord, which allows fast detachment of the mask, is optionally available for all JOYCE SilkGel full face masks.

Product Description	Article no. Size S	Article no. Size M	Article no. Size L
JOYCE SilkGel vented	26118	26128	26138
JOYCE SilkGel non-vented	26168	26178	26188
JOYCE SilkGel Full Face vented	26418	26428	26438
JOYCE SilkGel Full Face non-vented	26468	26478	26488

Replacement Parts

For both masks

Headgear

incl. headgear clips
WM 26350



Cap for pressure measurement ports

WM 26208



Rotating sleeve

WM 26288



Tube anchoring strap

WM 26774



Headgear clips

4 pieces
WM 26205



SilkGel forehead cushion

WM 26270



SilkGel forehead support

incl. SilkGel forehead cushion, coarse and fine adjustment components
WM 15673



Ball-and-socket Set NV (blue)

Retaining ring NV, elbow NV and rotating sleeve NV
WM 26207



Carrying bag (not shown)

WM 26295

Nasal Mask

Mask cushion

SilkGel, S
WM 26152

SilkGel, M
WM 26153

SilkGel, L
WM 26154



Ball-and-socket joint Set, vented



Outer Packaging nasal (not shown)

WM 14611

Full Face Mask

Mask cushion

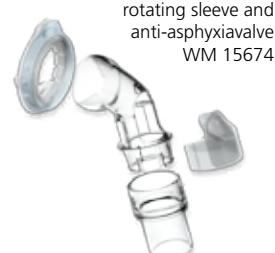
SilkGel, S
WM 26452

SilkGel, M
WM 26453

SilkGel, L
WM 26454



Ball-and-socket joint Set, Full Face vented



Outer Packaging Full Face (not shown)

WM 14612

Accessories

Quick-release

Quick-release cord (ripcord)
WM 26560

You'll find our complete range of therapy solutions, accessories and mask systems at: weinmann.de.

Technical Data JOYCE SilkGel

CE 0197

Certified Quality Management System
meeting EC directive 93/42/EEC,
Annex B (EN ISO 13485:2003)

	Nasal Mask	Full Face-Mask		Nasal Mask	Full Face-Mask
Product Class as per 93/42/EWG:	II a		Flow Resistance		
Dimensions (W x H x D):	about 80 x 130 x 90 mm ¹	about 107 x 160 x 106 mm ¹	■ Vented variants		
Weight:	about 85 g ¹	about 102 g ¹	at 50 l/m:	0.02 hPa	0.02 hPa
Therapy pressure range:	4 hPa to 40 hPa		at 100 l/m:	0.26 hPa	0.11 hPa
Tube connection conus as per EN ISO 5356-1:			■ Non-vented variants		
■ vented variants:	Ø 22 mm (male)		at 50 l/m:	0.09 hPa	0.09 hPa
■ non-vented variants:	Ø 22 mm (female)		at 100 l/m:	0.37 hPa	0.37 hPa
Pressure measurement connection:	Ø 4 mm		■ Anti-asphyxia valve		
Temperature Range			at 50 l/m:	–	0.5 hPa
■ Operation:	+5 °C to +40 °C		at 100 l/m:	–	2.0 hPa
■ Storage:	-20 °C to +70 °C		Declared duad noise emission values in compliance with ISO 4871, uncertainty factor 3 dB(A)		
Service Life:	up to 12 Monate ²		■ Sound intensity level:	15 dB(A)	16.5 dB(A)
			■ Sound power level:	23 dB(A)	24.5 dB(A)
			Hydraulic Pressure Anti-asphyxia valve (vented variants)		
			■ open:	–	≤ 1 hPa
			■ closed:	–	≤ 2 hPa

¹ Depends on size and variant

² Materials used in the manufacture of the mask age faster when they are subjected to strong cleaning agents. Therefore, in isolated cases it may be necessary to replace the mask earlier.